



### ECD3023-WX

Condizionatore da parete 3000 W  
Wall mounted air conditioner 3000 W

Codice/Code		ECD3023-WX
Cofano/Cover		Acciaio Inox/Stainless Steel
Capacità di raffreddamento/Cooling Capacity	L35-L35 Watt	2690
DIN 3168	L35-L65 Watt	1618
Voltaggio-Frequenza/Operating Voltage-Frequency	V/hz	1-220-230/50-60
Corrente di spunto/Starting Current	A	13,8
Corrente di funzionamento/Operating Current	A	6,2
Fusibile/Fuse	A	32
Consumo energetico/Power Consumption	Watt	1065
DIN 3168	Watt	1199
Pressione Massima/Max.Pressure	BAR	26
Dimensione/Size-Height-Width-Depth	mm	1004/411/225
Dimensione imballo/Packed Size-Height-Width-Depth	mm	1060/466/280
Peso Netto/Net Weight	Kg	53
Peso Lordo/Gross Weight	Kg	54
Vol. Max.Circuito Int./Max. Air Volume Internal Circuit	m <sup>3</sup> /h	945
Vol. Max.Circuito Ext./Max. Air Volume External Circuit	m <sup>3</sup> /h	1175
Tipo di Refrigerante/Type of Refrigerant		R134a
Quantità di Refrigerante/Amount of Refrigerant	gr	700
Range operativo/Operational range	°C	0/+55
Grado di protezione/Protection Category	Internal Circuit	IP65
IP to IEC 60 529	External Circuit	IP34
Montaggio/Mounting Method		Montaggio a parete/Wall mounted
Colore/Color	(*)	Stainless Steel
Livello suono/Sound Level	dBA	73
Impostazione termostato/Thermostat Setting	°C	35
Classe di Efficienza Energetica/Energy Efficiency Rating	EER	2,52

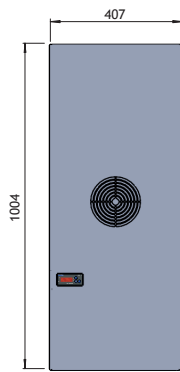
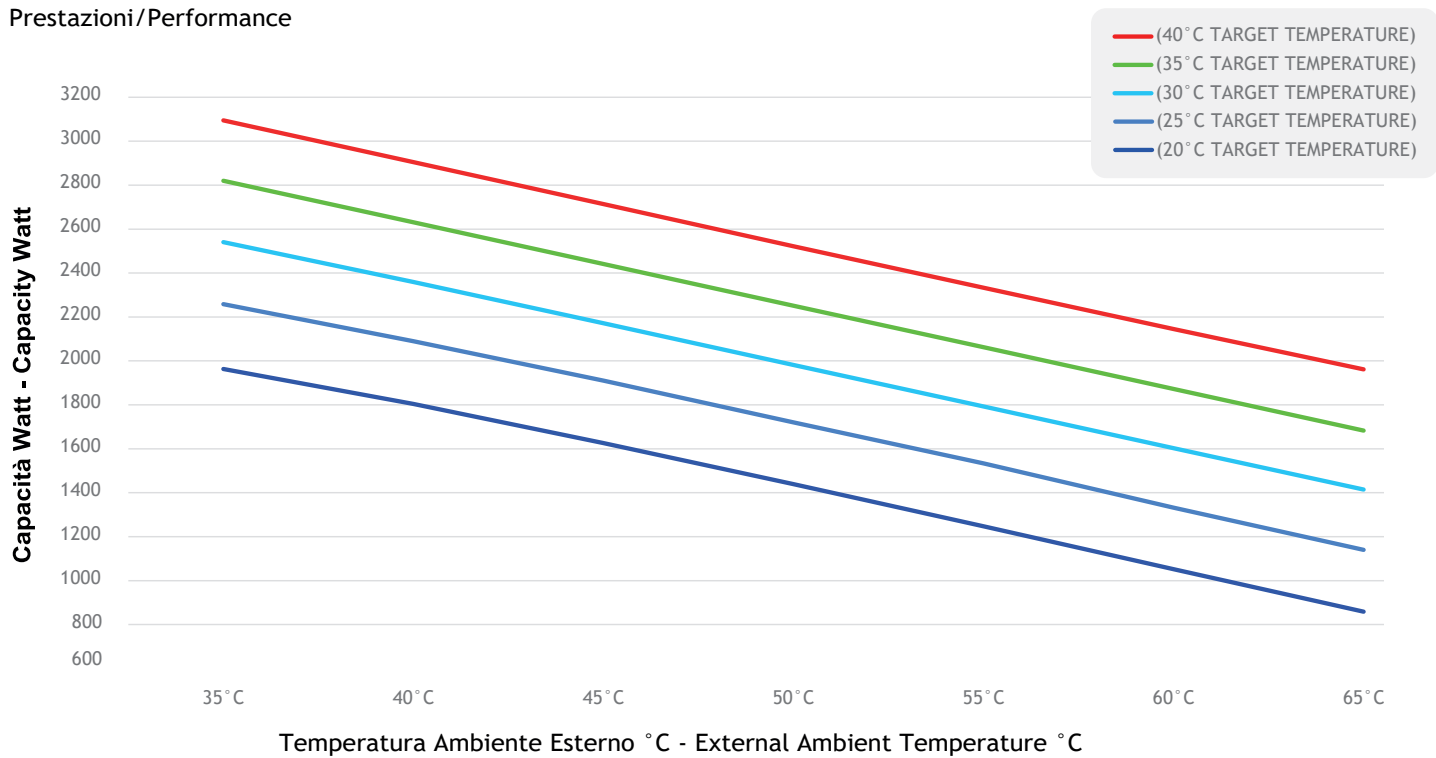
(\*) Per finiture personalizzate richiedere informazioni

Ask information for different color options

\*Nelle soluzioni di raffreddamento questo refrigerante può essere utilizzato conformemente al regolamento sui gas fluorurati fino al 1 ° gennaio 2030. (Regolamento (UE) 2024/573).

In cooling solutions, this refrigerant may be used in accordance with the regulation on fluorinated gases until January 1, 2030. (Regulation (EU) 2024/573)

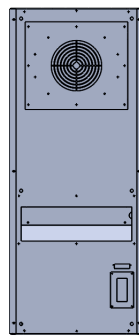
Prestazioni/Performance



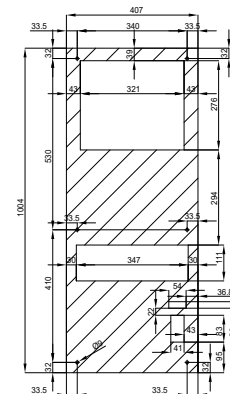
VISTA FRONTALE  
FRONT VIEW



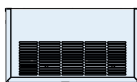
VISTA LATERALE  
SIDE VIEW



RETRO  
BACK VIEW



DIMA DI FORATURA  
CUTTING TEMPLATE



VISTA DALL'ALTO  
TOP VIEW

